



Proficiency HMI/SCADA – iFIX 5.1

Drive greater productivity with better analytics

New features

- Global Time Control Runtime Ribbon
- Enhanced Historian data links with fully compatible dynamos
- XY chart for plotting and viewing data
- Windows® 7 & Server 2008 (32bit) support

Benefits

- Drive faster and better decision making
- Perform instant situational analysis with real-time and historical data
- Provide easier navigation for users
- Reduce system downtime due to more flexibility with redundant systems
- Leverage support of Microsoft's latest operating systems

Take advantage of the latest release of GE Intelligent Platforms' Proficiency* HMI/SCADA – iFIX* software, which offers even more intelligent control and visibility into your operations than ever before. This powerful and proven HMI/SCADA software enables businesses to further increase productivity, as GE continues to add customer-requested features.

Faster navigation

iFIX 5.1 delivers a new standard component, the Runtime Ribbon, which empowers users with a navigation center to which they can launch specific screens in your iFIX application and/or third-party tools.

Transform historical data into information

iFIX 5.1 brings a new enhanced Proficiency Historian data link that increases flexibility in runtime and delivers more power for your applications. Now you can use historian as a data source for animations, dynamos, and scripts in any of the following modes: Sample, Average, High, Low, Interpolated, Standard Deviation, and Total.

You can specify the start date and time, duration, update rate, and time zone. In addition, you can require that the time stamp appears with the historical data link or be hidden.

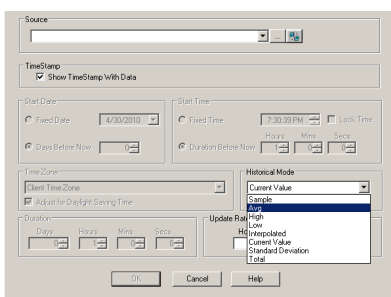
Operational playback and time-based graphic overlays

iFIX 5.1 introduces the "Global Time Control" (GTC) as part of the Runtime Ribbon. The innovative GTC feature enables users to play back their operational data and pinpoint problems by selecting specific timeframes and update rates—enabling the screen's historical elements to instantly switch to the desired timeframes.

You can replay and analyze past events in slow motion, real time, or fast forward—to identify and troubleshoot issues, and prevent repeat occurrences. The GTC can also easily control your trends and charts, ultimately delivering your operators with more power for better decisions.

New OS & historian support

iFIX supports the latest platform and data storage releases, and provides support for legacy software as well. iFIX 5.1 offers **Windows 7 (32bit) & Server 2008 (32bit)** support, along with support for Microsoft® Vista SP1, Windows XP, and Windows Server 2003. In addition to platform support, iFIX 5.1 supports SQL Server 2008, SQL 2005, and Proficiency Historian 3.5.



<caption> The enhanced Proficiency Historian data link in iFIX 5.1 increases flexibility when using historian information. With these new modes supported throughout iFIX, you can push better analytics and more actionable information to users.

Proficy HMI/SCADA - iFIX 5.1: Drive greater productivity with better analytics

New and updated charts

iFIX features a new XY chart that enables users to view the relationship between two types of data. There are also many new features for all charts using historical data:

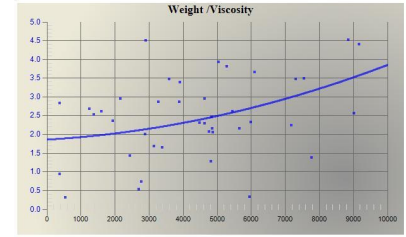
- **Auto Adjust Interval** - Causes the chart intervals to automatically adjust based on the duration and number of points within the chart, resulting in an evenly spaced data display and easier operation for users.
- **Time Cursor Tool Tips** - Allows you to display the time cursor tool tips for the chart data source at run time.
- **Advanced Graphics** - Offers improved visual quality using bitmap/gradient styles, drop-shadow, 3D effects, a variety of plotting style lines, and improved font appearance.

Updated Discovery and Auto-Assembly (DAC) Tool

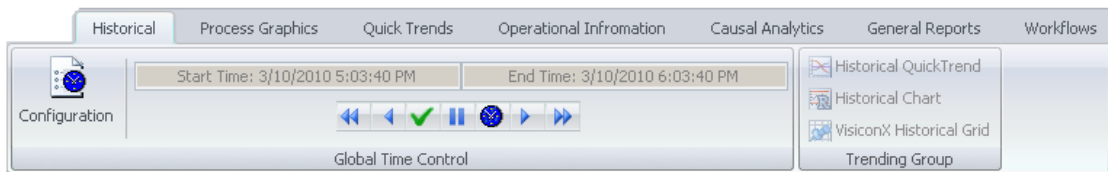
I/O Discovery and HMI/SCADA Configuration are fast and easy! The DAC Tool delivers an easy-to-use, single point interface for discovering and configuring HMI/SCADA databases and drivers with iFIX. With iFIX 5.1, the DAC has been enhanced to provide a single point of configuration for the driver and historian—making the creation of new projects and the updating of existing projects quick and easy.

New Remote Maintenance Mode

Maintenance Mode in iFIX 5.1 allows you to temporarily suspend synchronization between the two redundant SCADA nodes from a remote iFIX client. You can make changes to your iFIX database while the application continues to run—ultimately empowering your iFIX engineering and support teams to have more control of the application without the need to take it offline.



<caption> iFIX 5.1 delivers a new XY chart to correlate and view the relationship between two types of data—enhancing your HMI/SCADA application capabilities.



<caption> The iFIX 5.1 Runtime Ribbon and Global Time Control enable efficient interaction by providing instant access to graphics, third-party applications, and analytics. As a result, you can take advantage of increased flexibility and time savings.

For more information, visit www.ge-ip.com/ifix

About GE Intelligent Platforms

GE Intelligent Platforms, a General Electric Company (NYSE: GE), is an experienced high-performance technology company and a global provider of hardware, software, services, and expertise in automation and embedded computing. We offer a unique foundation of agile, advanced and ultra-reliable technology that provides customers a sustainable advantage in the industries they serve, including energy, water, consumer packaged goods, government and defense, and telecommunications. GE Intelligent Platforms is a worldwide company headquartered in Charlottesville, VA and is part of GE Home and Business Solutions. For more information, visit www.ge-ip.com.

GE Intelligent Platforms Contact Information

Americas: 1 800 433 2682 or 1 434 978 5100

Global regional phone numbers are listed by location on our web site at www.ge-ip.com/contact

www.ge-ip.com



GE
Intelligent Platforms